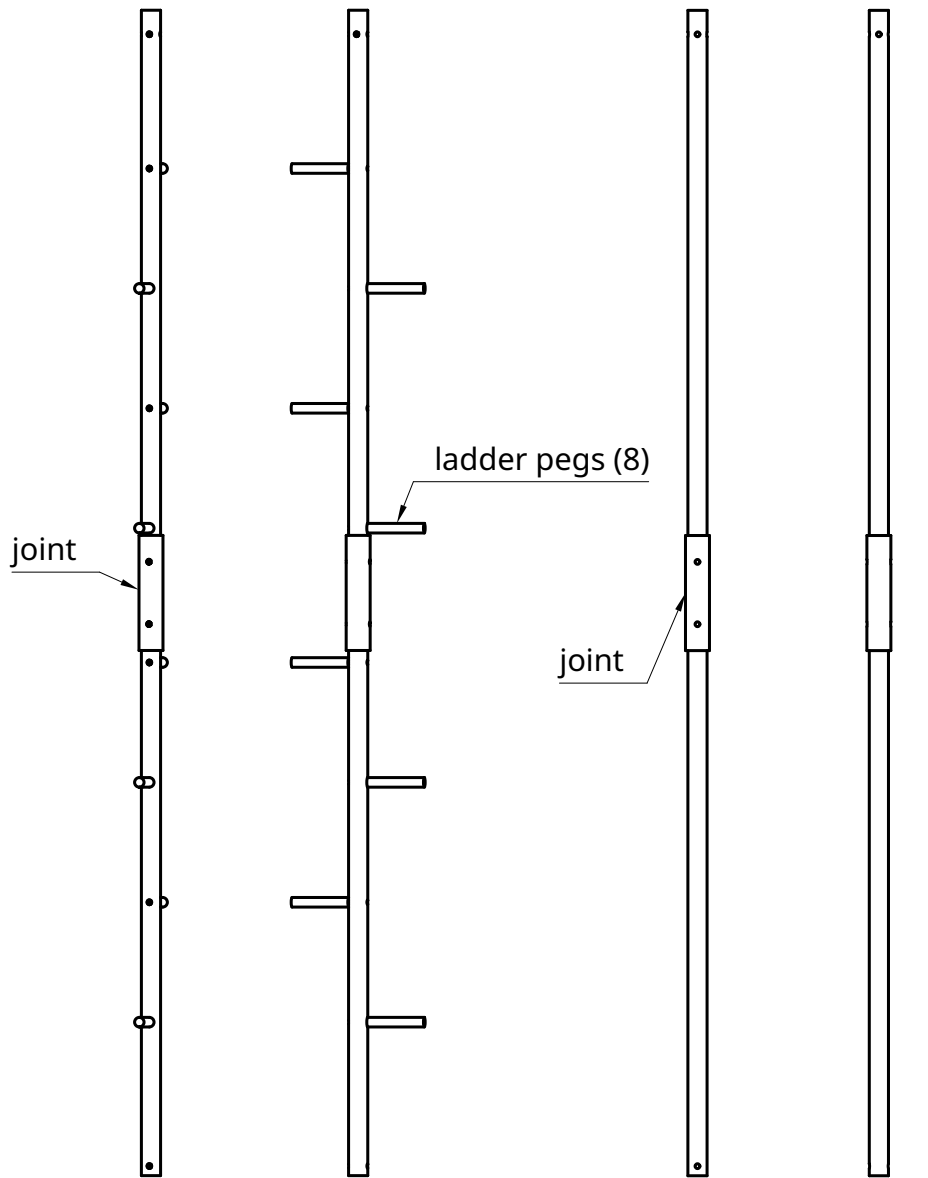


|   |        |                                      |            |   |      |
|---|--------|--------------------------------------|------------|---|------|
| UNLESS OTHERWISE SPECIFIED,<br>DIMENSIONS ARE IN INCHES<br><br>NOTE: scale of drawings is variable<br>throughout document | NAME   | SIGNATURE                            | DATE       | TITLE<br><br><b>Vibracore extraction tripod</b> |      |
|   | DRAWN  | Andrew J. Moodie<br>amoodie@rice.edu | 2017-04-21 |   |      |
|   |        |                                      |            |   |      |
|   |        |                                      |            |   |      |
| MATERIAL  | FINISH |                                      | SIZE       | DWG NO.   | REV. |
| aluminium   |        |                                      | <b>A4</b>  | tripod assembly overview                        | -    |
| SCALE   | WEIGHT | SHEET                                |            | 1 of 11   |      |
| 1:25  |        |                                      |            |   |      |



ladder assembly (1)

pole assembly (2)

3 leg assemblies

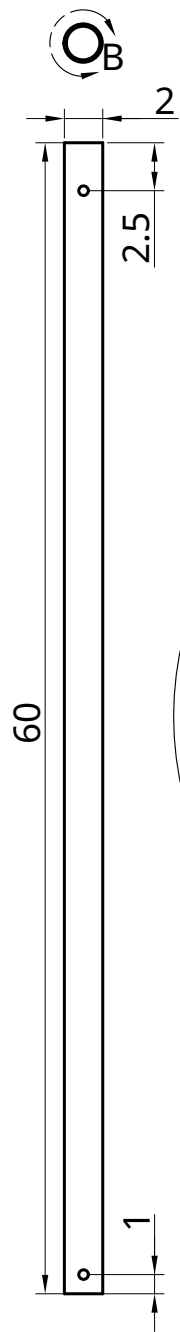
- 1 ladder
- 2 pole

all leg assemblies are comprised of two pole segments (upper and lower) joined by a joint piece

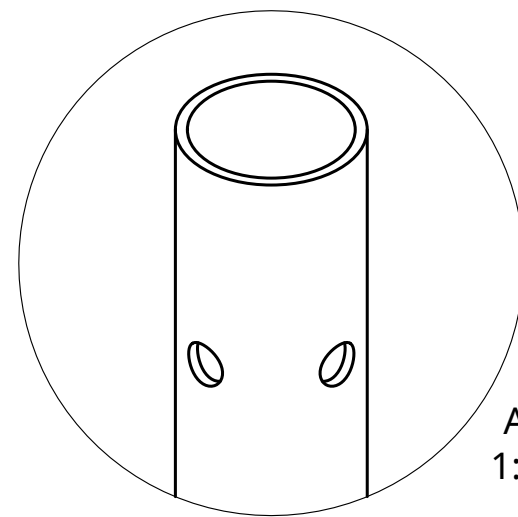
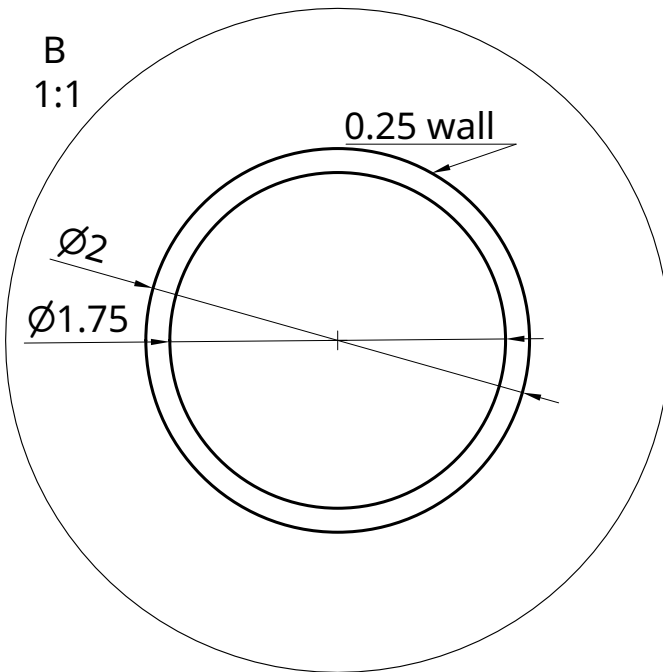
poles are secured to joint with bolt and washer and nut

pole segments are 2" OD aluminium pipe w/ 0.25" wall

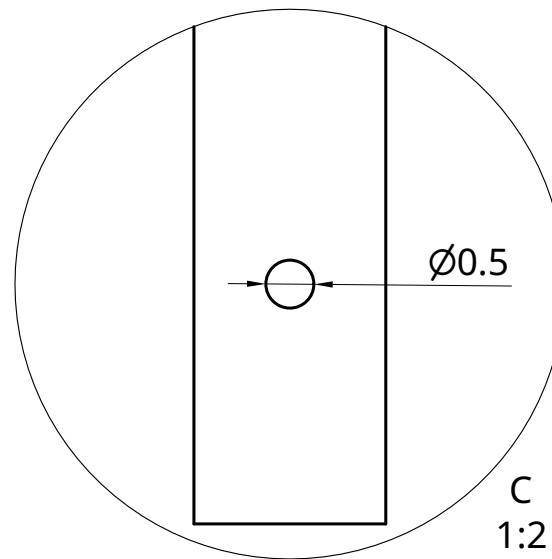
ladder assembly is similar to pole assembly with additional holes for mounting ladder pegs



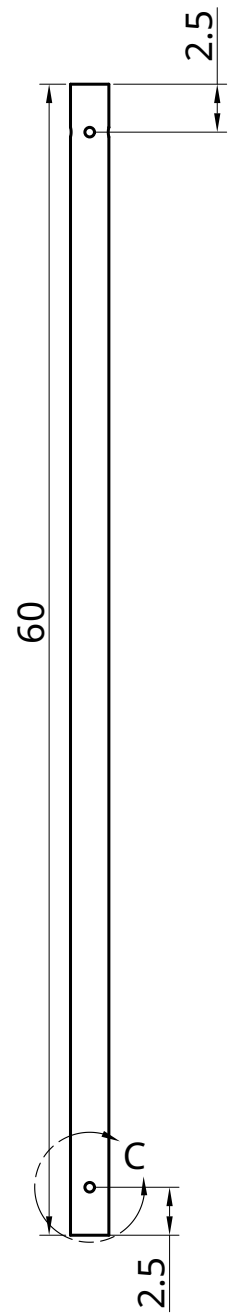
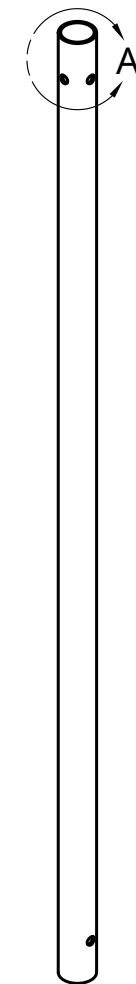
lower pole

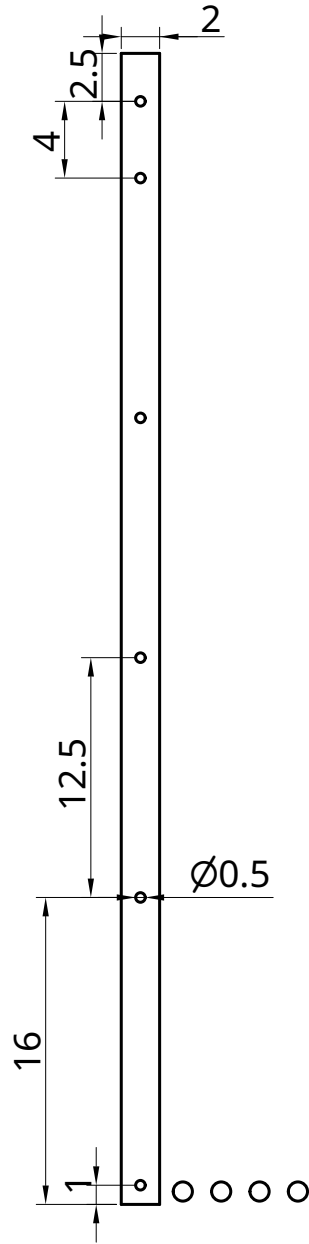
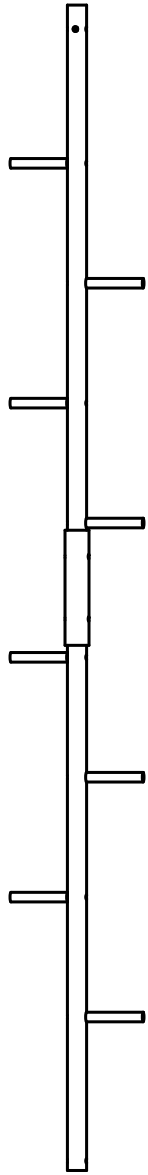


NOTE: 4 symmetric holes at top end of upper pole

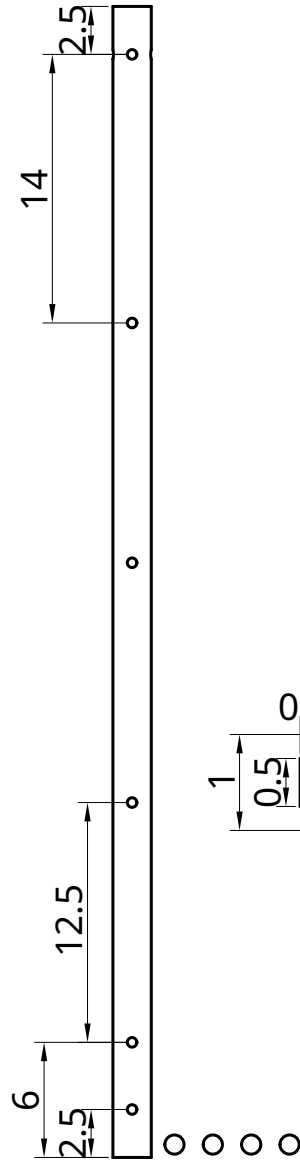


upper pole

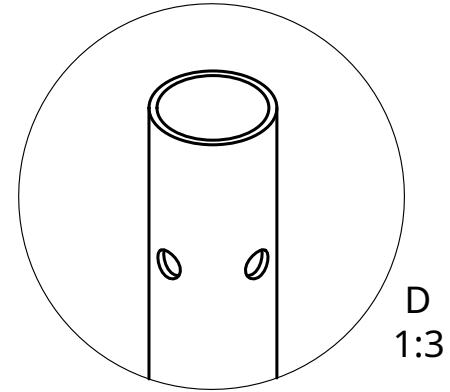
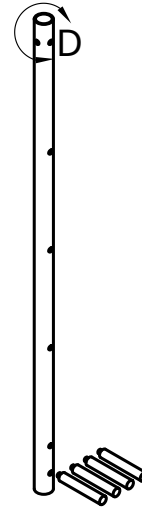




lower ladder  
1:10

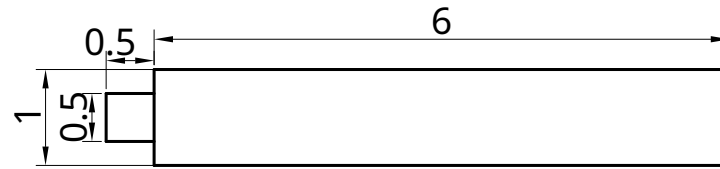


upper ladder  
1:10

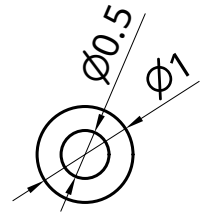


D  
1:3

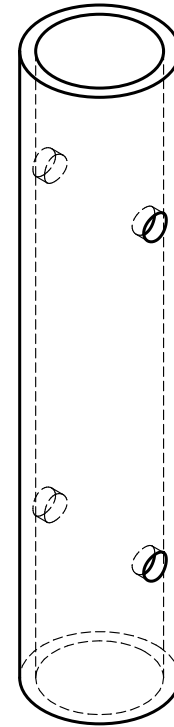
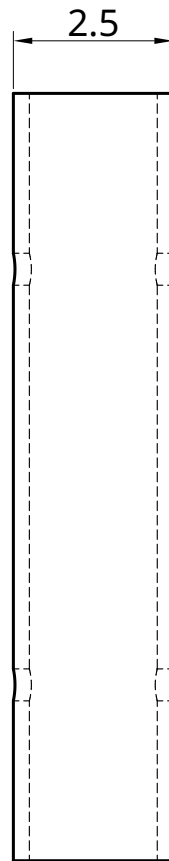
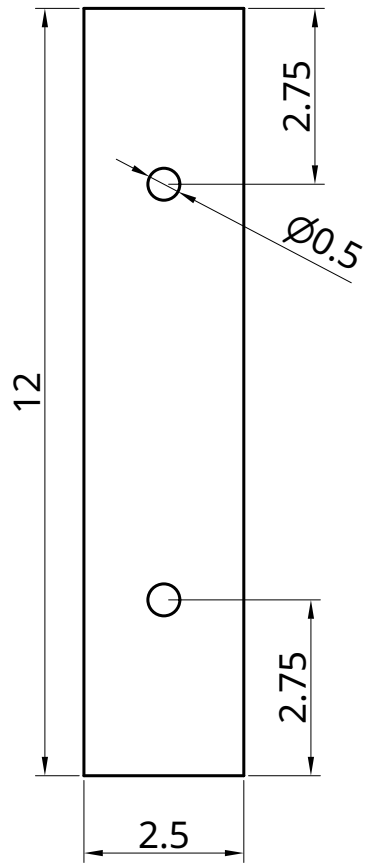
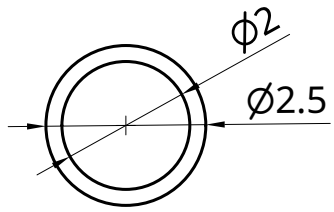
NOTE: 4 symmetric holes at top end of upper ladder

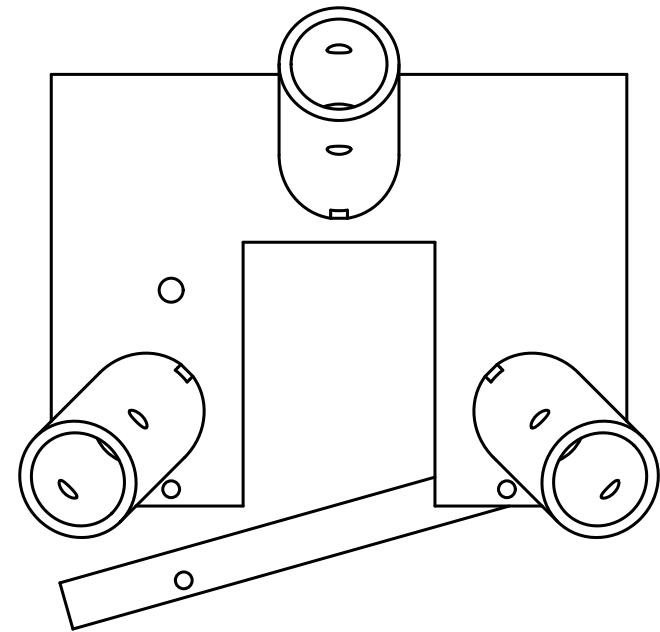
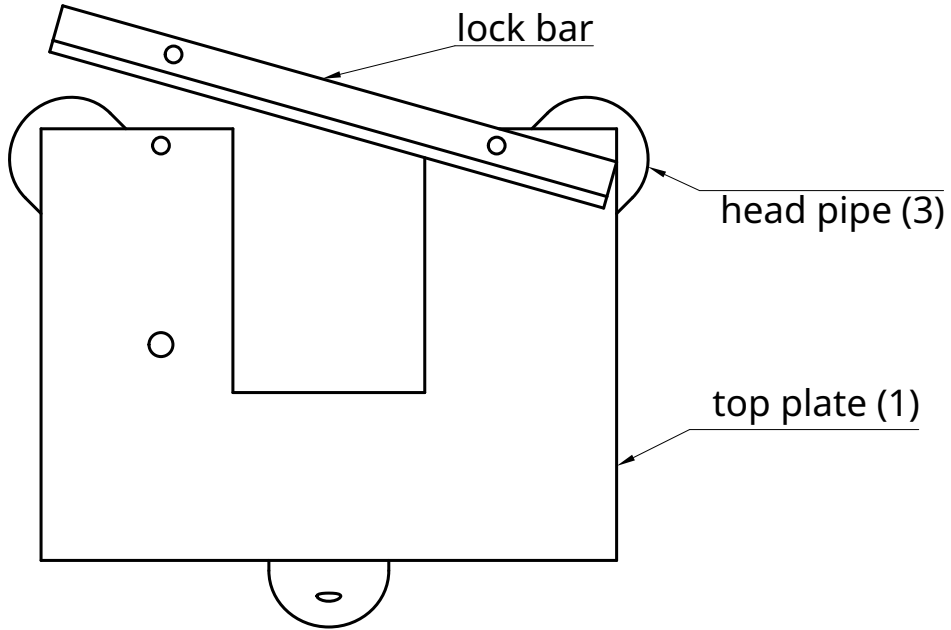
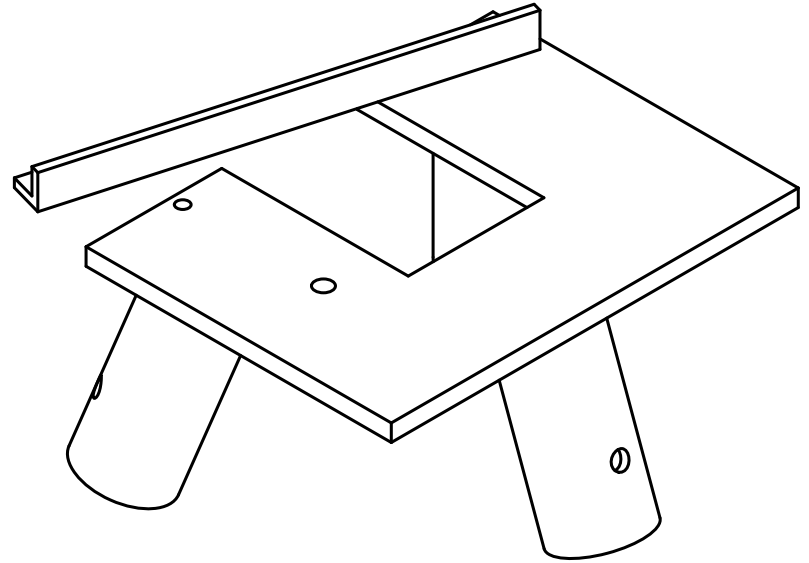
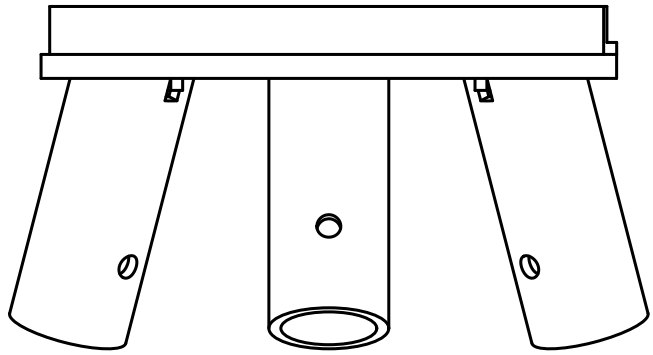


ladder peg  
1:2



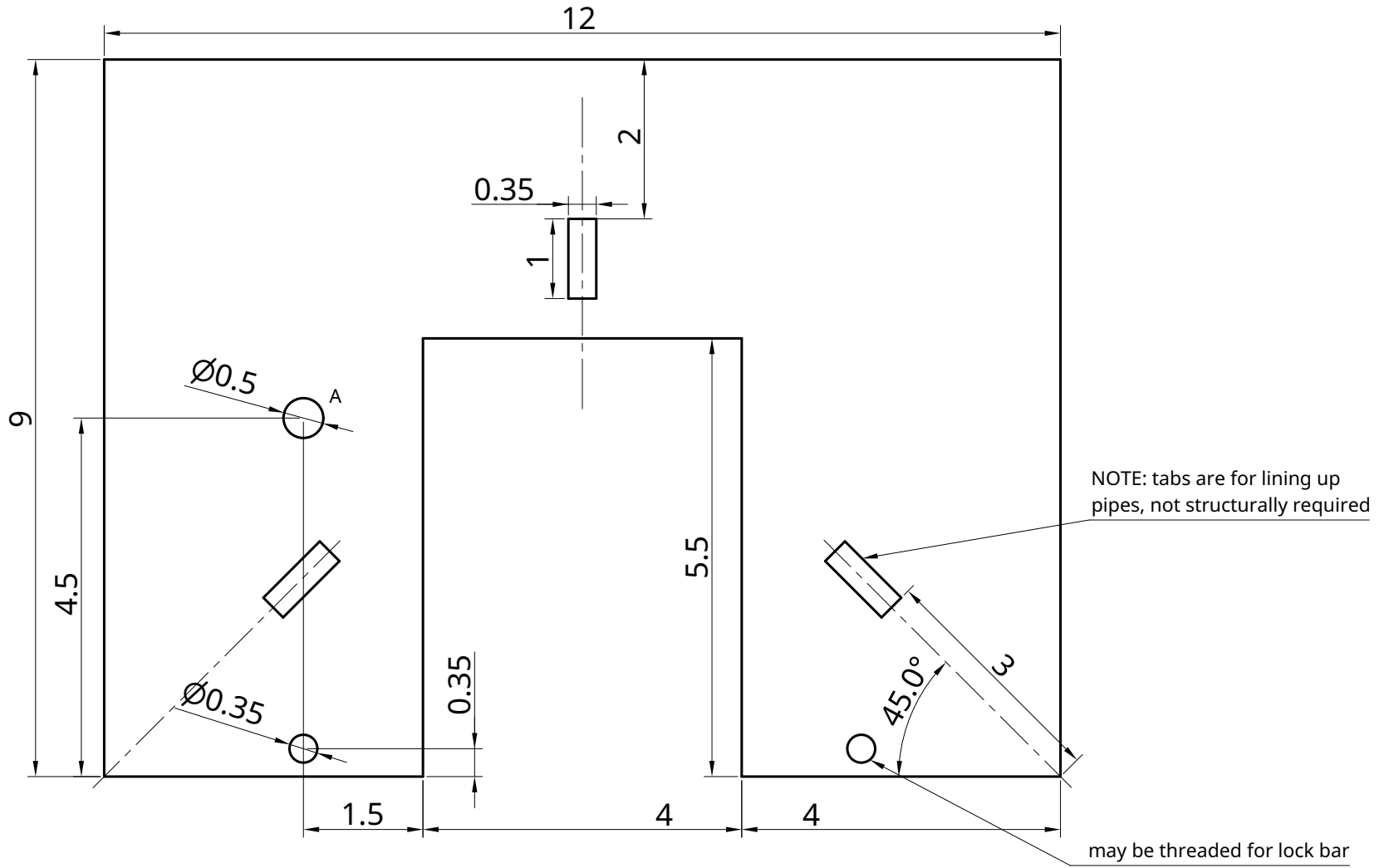
NOTE: pegs should be welded to ladder poles



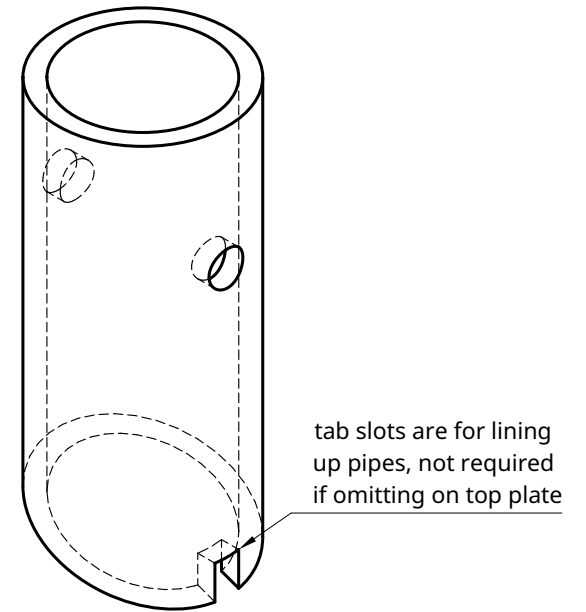
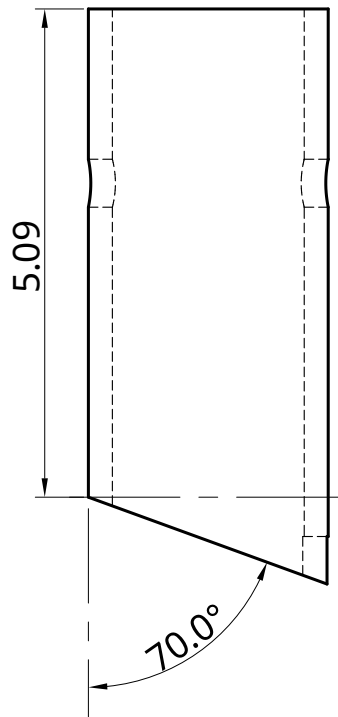
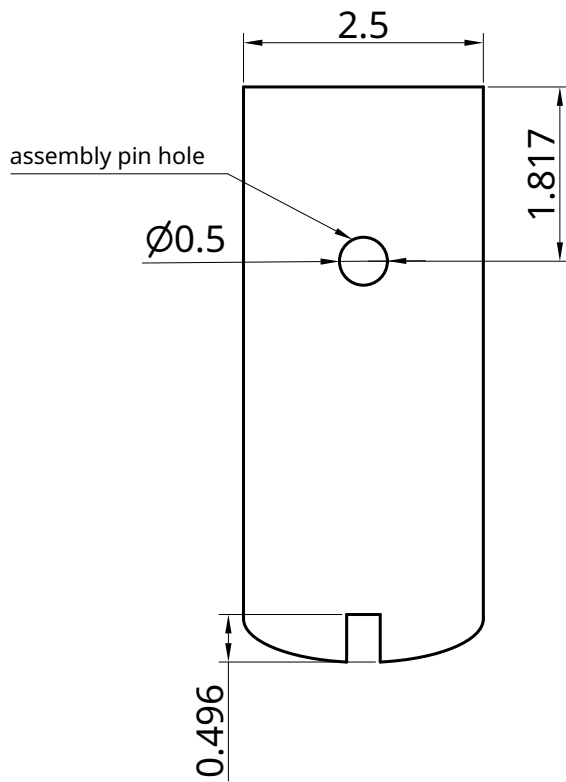
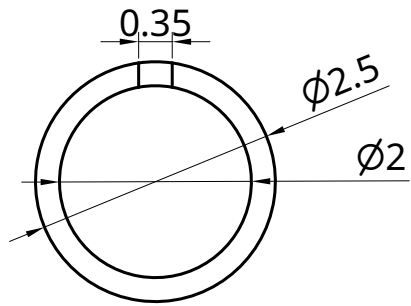


NOTE: pipes should be welded to bottom of top plate

NOTE: lock bar is secured with pins; the pin slots in the top plate may be threaded to allow a bolt to secure the lock bar in place



NOTE: hole labeled A should be threaded for an eye-bolt to hook winching system (not described herein) for core lifting

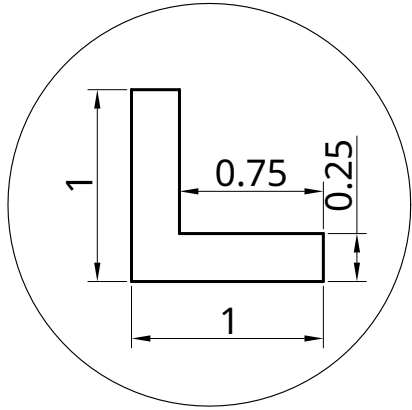
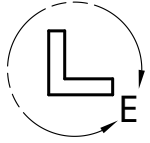


NOTE: exact dimensions of pipe length are flexible as long as distance from assembly pin to top-plate distance > 2.5"

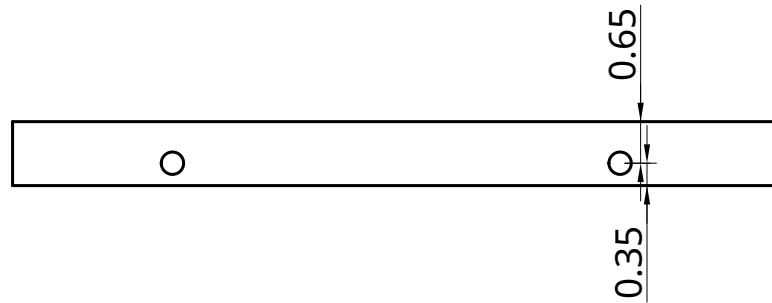
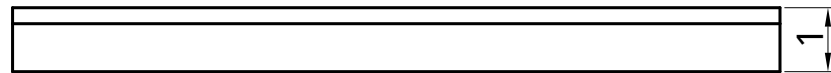
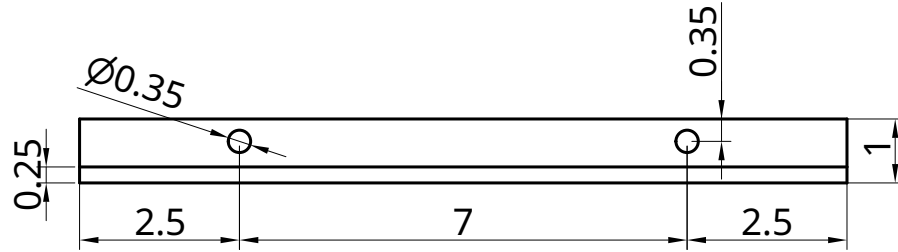
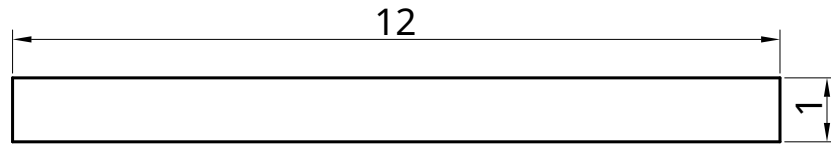
NOTE: pipes should be welded to bottom of top plate

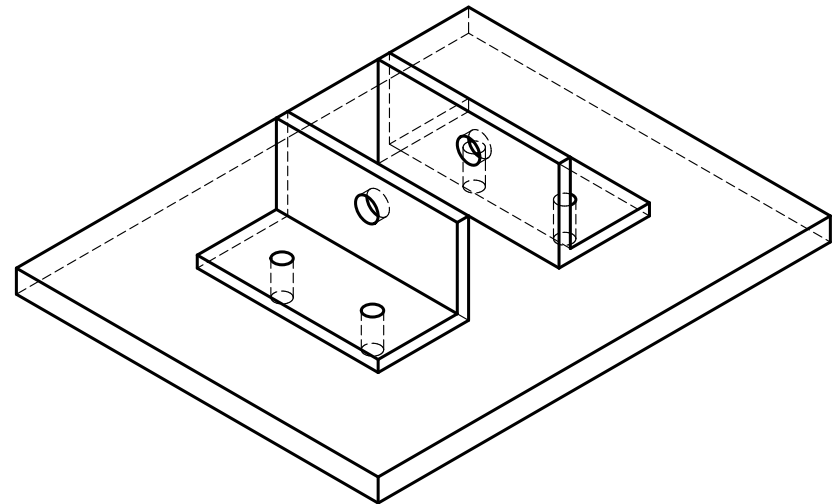
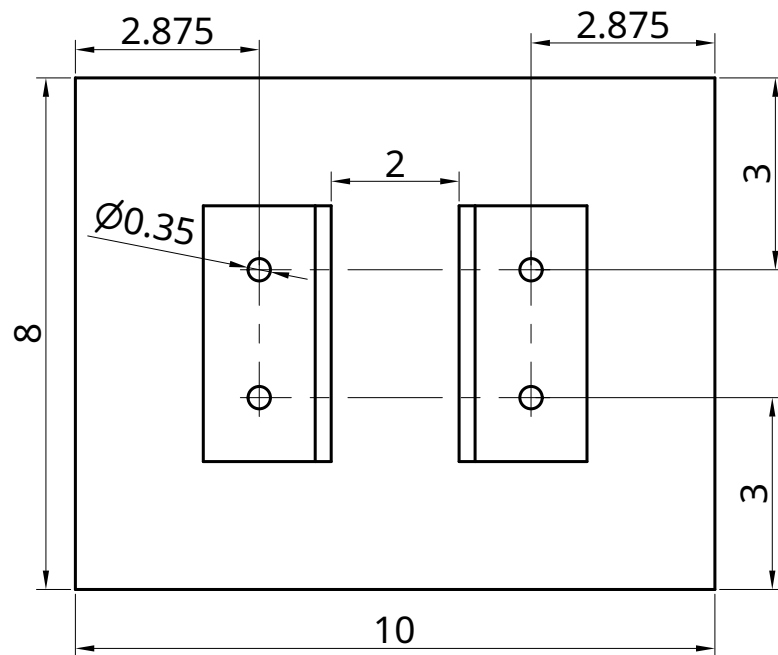
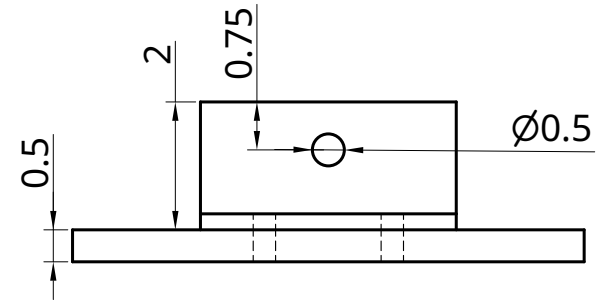
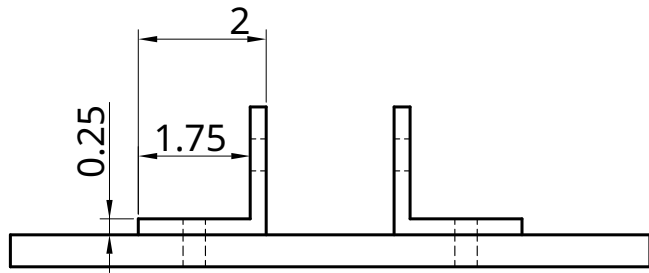
|         |           |      |    |       |     |       |         |      |   |
|---------|-----------|------|----|-------|-----|-------|---------|------|---|
| DWG NO. | head pipe | SIZE | A4 | SCALE | 1:2 | SHEET | 8 of 11 | REV. | - |
|---------|-----------|------|----|-------|-----|-------|---------|------|---|





E  
1:1





NOTE: flanges on top of feet are separate piece; may be welded and holes may be omitted, or can be joined by recessed screw from bottom and washer and nut above

